



FIS/hrd®
Human Capital Management

A Solution to Rely on

References

– The Best Proof



B/S/H/

BSH BOSCH UND SIEMENS HAUSGERÄTE GMBH

BSH Bosch und Siemens Hausgeräte GmbH
Manufacturer of home appliances, Munich

Wieland

Wieland-Werke AG
Manufacturer of semifinished products
made of copper and copper alloys, Ulm

DÜRR

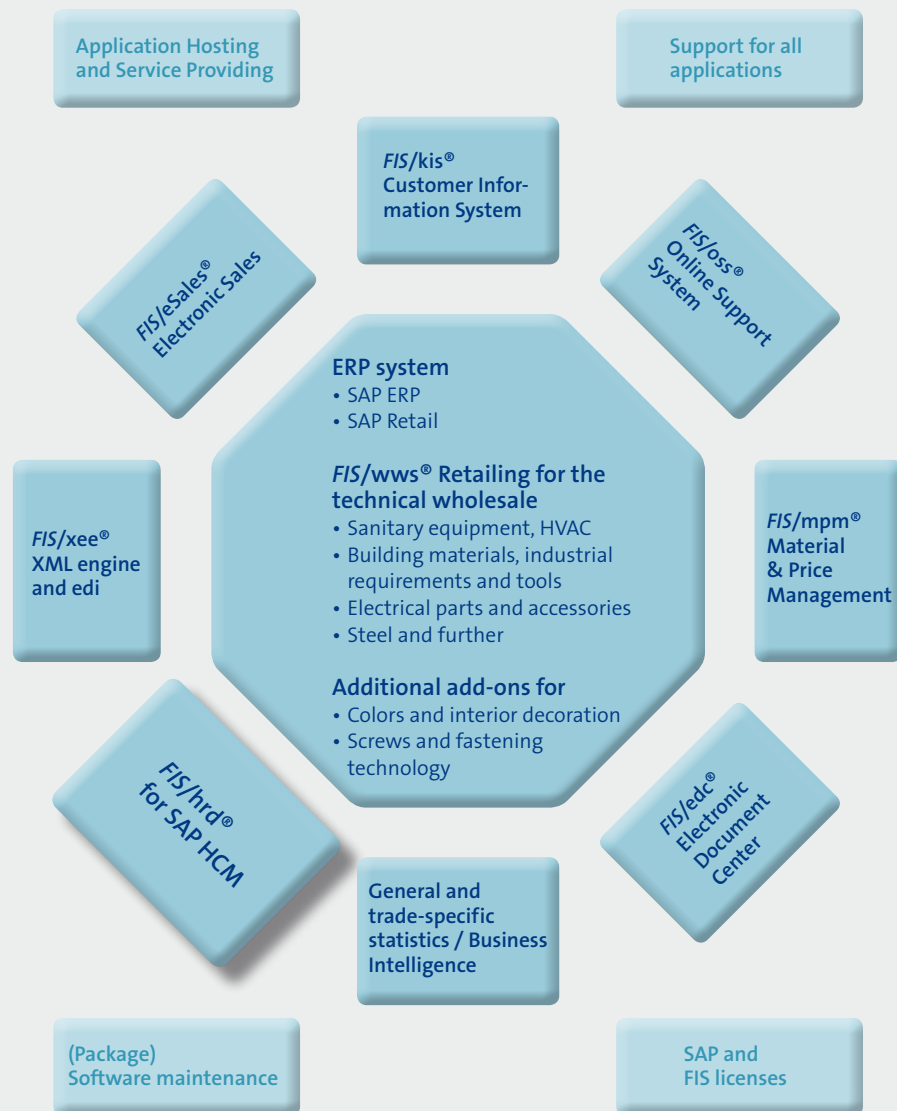
Dürr AG
Automobile manufacturing, Stuttgart

Essex Pharma

Essex Pharma GmbH
Pharmaceutical enterprise, Munich

This is only a small selection of our reference enterprises.

The All-In-One Solution for the Technical Wholesale



All technologies base on the same software technology.
The integration scenario among SAP ERP and the complementary solutions is pre-configured and supplied by FIS.
All applications and technologies are installed by FIS.

FIS is one-stop-supplier!

FIS/hrd® Family

SAP HCM Maintenance Tools

We have summarized classic requirements such as the transfer of HCM data between SAP systems or a re-engineering combined with the option of developing and analyzing the SAP remuneration payroll and time management in revision- and versioning-capable form in one product family. *FIS/hrd®* supports you in the various tasks accruing in the area of Human Capital Management – also in your company. In the everyday work, fiscal year change activities, support packages, release upgrades or the combination and spin-off of company parts, *FIS/hrd®* quickly proves to be an indispensable tool. Intuitive operation and clear display will very quickly give you the necessary security for working with *FIS/hrd®*. The central instance for the components of the family is the *FIS/hrd®* Manager.

Application options

- Problem solving also outside production systems
- Support in SP and release upgrades
- Revision-proof testing and developing

Benefits

- Best data quality possible
- High degree of time saving
- Better protection of the production system
- Easy handling
- Improved analysis functionality

Realization

- Modular structure
- Intuitive operation
- Clear display
- Authorization-controlled
- Double verification principle

FIS/hrd® Manager

FIS/hrd® CCC – Copy · Compare · Convert

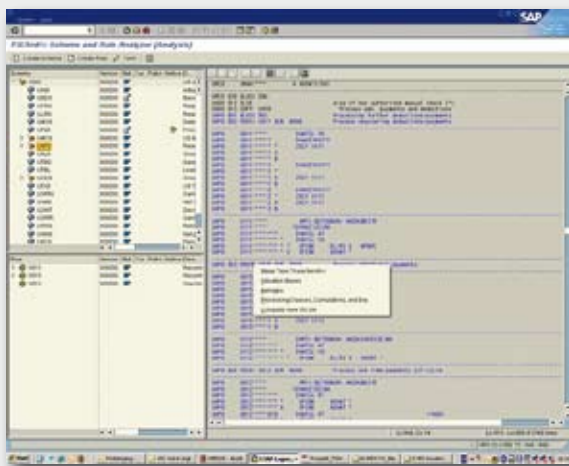
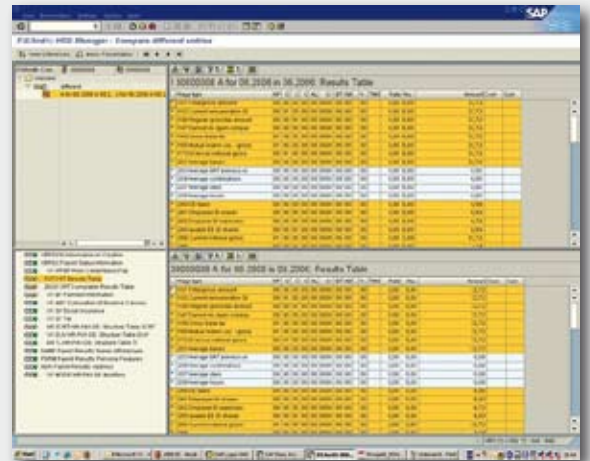
FIS/hrd® TRM – Time Recording Management

FIS/hrd® SRA – Scheme and Rule Analyzer

FIS/hrd® An Add-On of FIS GmbH to SAP Human Capital Management

SAP HCM - FIS/hrd® CCC: Copy · Compare · Convert

- Transfer of HR and object data
- Problem solving also outside production systems
- Creation of test and training data
- Support in SP and release upgrades
- Data conversion
- Client/system combination or separation

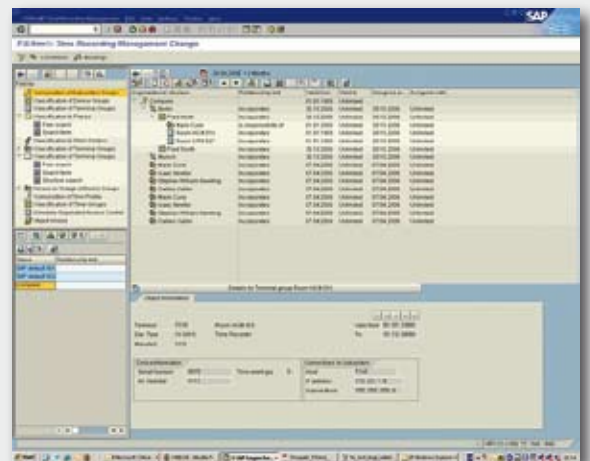


SAP HCM - FIS/hrd® SRA: Scheme and Rule Analyzer

- Clear display and evaluation
- Support in analysis and maintenance
- Versioning of schemes, rules and table contents, version management
- Development capable of revisions by means of note functionality
- Matching support
- Support in payroll analysis
- Support in error search

SAP HCM - FIS/hrd® TRM: Time Recording Management

- Administration of terminals with their characteristics and assignments
- Assignment of employees to master terminals
- Enhanced evaluation options
- Operation directly from the SAP system



Our Products

- **FIS/wws[®]**
Retailing for the technical wholesale
- **FIS/xee[®]**
XML engine and edi for SAP ERP
- **FIS/edc[®]**
Automated incoming invoice processing and further processing in SAP ERP
- **FIS/eSales[®]**
The shop for Internet distribution
- **FIS/mpm[®]**
Material & Price Management
- **FIS/hrd[®]**
Safe testing in the area of Human Capital Management
and revision-proof development of Customizing
- **FIS/oss[®]**
Online support system for the application support
- **FIS/kis[®]**
Customer Information System
- **FIS/intcom[®]**
Linkage software for third-party systems



FIS, FIS/wws[®], FIS/xee[®], FIS/edc[®], FIS/eSales[®], FIS/mpm[®], FIS/hrd[®], FIS/oss[®], FIS/kis[®] and FIS/intcom[®] are registered trademarks of FIS GmbH, Grafenrheinfeld. All other products are registered or not registered trademarks of the respective companies.

FIS GmbH

FIS Informationssysteme and Consulting GmbH (FIS) is an independent company with currently approx. 300 employees focusing on SAP projects. We develop separate solutions completing SAP standard software products in a meaningful way and completely covering the core requirements of the technical wholesale by means of industry-specific function packages. However, they can also play an essential role in other SAP user companies in the application environment. Being a Service House for the technical wholesale, FIS is the ideal partner for the planning of systems, their infrastructure and implementation up to the support after going live. All software systems and tools offered by SAP are consulted, supported and licensed by FIS GmbH.

FIS is SAP system house with “Gold” status, representing the top-level partner form of SAP AG.

An efficient method and QM concept ensures the consultation quality of the projects.

FIS is one of the few consulting companies being DIN EN ISO 9001 certified.

On January 01, 2001, FIS founded its first subsidiary, FIS-ASP Application Service Providing und IT-Outsourcing GmbH (FIS-ASP). FIS-ASP is a service company for Application Hosting, Outsourcing as well as Out-tasking of SAP systems for industry, trade and service companies.

FIS together with its subsidiary FIS-ASP is one of the very few Full Service providers for SAP applications.

The branch office “Rhein-Main” in Offenbach, opened on July 01, 2005, focuses on document reading and document management.

On April 01, 2007, the second FIS branch office opened in Stuttgart-Leonberg. Skilled employees offer competent consulting and demanding services around SAP for medium-sized businesses. The core business of this branch office focuses on “Template” projects based on the FIS industry solution for the technical wholesale.

On January 01, 2008, the branch office in the USA started its business activities. The subsidiary “FIS Information Systems Inc.” is based in Tarrytown, New York, approx. 50 km to the north of New York City. First of all, document management solutions and master data projects are to promote the business.

On June 03, 2008, FIS took over SST “Software Solutions Team Sp. z o.o.”, based in Gliwice, Upper Silesia/Poland. Thus, FIS has a subsidiary for the region of Poland – Hungary – Czech Republic – Slovakia. The company employs highly qualified personnel (IT specialists/engineers) and is active in the fields of SAP, Java and .NET.



Headquarters of FIS, Grafenrheinfeld



**FIS Informationssysteme
und Consulting GmbH**

Röthleiner Weg 1
D-97506 Grafenrheinfeld
Tel.: +49 97 23 / 91 88-0
Fax: +49 97 23 / 91 88-100
info@fis-gmbh.de
www.fis-gmbh.de

Rhein-Main branch office
Sprendlinger Landstraße 178
D-63069 Offenbach

Branch office Stuttgart-Leonberg
Mollenbachstraße 33-35
D-71229 Leonberg

Subsidiary
**FIS-ASP Application Service Providing
und IT-Outsourcing GmbH**
Röthleiner Weg 4
D-97506 Grafenrheinfeld

Subsidiary
FIS Information Systems Inc.
520 White Plains Road, Suite 500
Tarrytown, NY, 10591, USA

Subsidiary
Software Solutions Team Sp. z o.o.
ul. Bojkowska 37
PL 44-101 Gliwice