



FIS SERVICES AND PRODUCTS
Technical Wholesale

The All-In-One Solution for All Acting Quickly

Success Lives on the Right Decisions



“On the basis of SAP ERP + FIS/wws[®], we have succeeded in an optimum mapping of our business processes. In order processing and logistics, we substantially increased productivity and supply readiness.”

Benedikt Mahr
Former Managing Director of Richter + Frenzel GmbH & Co. KG
2,600 users
Annual Turnover of abt. 800m EUR
Technical wholesale (HVAC)

“We were able to map our complex sales, service and distribution processes efficiently in a short project run-time on the basis of SAP ERP and FIS/wws[®]. Without FIS/wws[®], we wouldn't have reached the set targets in the given time period.”

Hans Georg Heintl
IT BBT Thermotechnik GmbH
1,580 users
Annual turnover of abt. 1,235 m EUR
Heating systems

“The integrated system offers us new chances in the cooperation with vendors and is simultaneously a great instrument for customer retention.”

“The benefits are obvious, as entire process chains are reproducible with few mouse clicks. The integration of retailing and accounting in particular offers enormous benefits.”

Andreas Kepplinger, responsible for Organization and Logistics
Project Manager at SHT Haustechnik for the SAP all-in-one implementation

References

– The Best Proof

RICHTER + FRENZEL

Richter + Frenzel GmbH & Co. KG
HVAC wholesale, Augsburg



CMS Caparol Marketing Services GmbH
Wholesale for colors and room-decorating,
Ober-Ramstadt

:pietsch

Kurt Pietsch GmbH & Co. KG
HVAC wholesale, Ahaus



F. Reyher Nchfg. GmbH & Co. KG
Technical wholesale for fasteners,
fastening technology, Hamburg



Bosch Thermotechnik GmbH
Heating systems, Wetzlar



Wäss & Schuster GmbH & Co. KG
Wholesale for colors and room-decorating,
Speyer



Hillmann & Ploog GmbH & Co. KG
Specialized wholesale trade for electronics,
Hamburg

Benefits for Our Customers ...

Trade specific templates

The manifold solution options in the SAP ERP system are preconfigured to approved solutions of the corresponding trade segment by means of the trade templates made available by FIS GmbH. Consequently, the project run-time can be shortened substantially. As to user trainings, merchant specific statistics, forms and data transfer, accordant tools and templates can be disposed of.

Our customers thus benefit from

- A quick and cost-saving implementation of the solution
- A minimization of the project risk due to already existing live processes
- The adaptation to the corresponding SAP release versions made by FIS (in the scope of the software maintenance)

User association

Regular meetings of *FIS/wws*® customers, who thus achieve the following objectives:

- Mutual exchange of experiences
- Development of new ideas and requirements for the *FIS/wws*® standard (development request)
- Joint solution development and
- Cost-sharing as to new developments, which cannot be included into the *FIS/wws*® standard

Package software maintenance

Together with the package, FIS supplies the software maintenance for the SAP and FIS products “one-stop”. There is only one contract for software maintenance, which comprises the following services:

- Permanent modernization and further development of the products
- Trouble-shooting by qualified application consultants as well as
- Making information on SAP and *FIS/wws*® applications available, e.g. concerning the release strategy

The customer has got a single point of contact and will not be referred to other organizations when it comes to queries or problems.



... in the Technical Wholesale

Financing

On request, FIS is taking over the whole financing of the project for all delivery and service components. Our customers can take the following benefits:

- No investment peak, but fixed and calculable monthly instalments (on request even on user basis)
- After expiration of the financing period, the customer becomes proprietor of the financing objects
- One-stop processing and thus reduction of the administration effort



Hosting platform

The FIS range of services for the technical wholesale also comprises the cost-saving operation of the entire applications on one hosting platform. This will be done in clients operation by our subsidiary ASP.

Our customers can take the following benefits:

- Cost-saving operation of the applications on the basis of fixed prices per user
- Operation of the applications by certified and highly-qualified employees
- Round-the-clock (7x24) availability of the employees and thus high system accessibilities
- Released resources at the customer site can be adopted for increasing the productivity

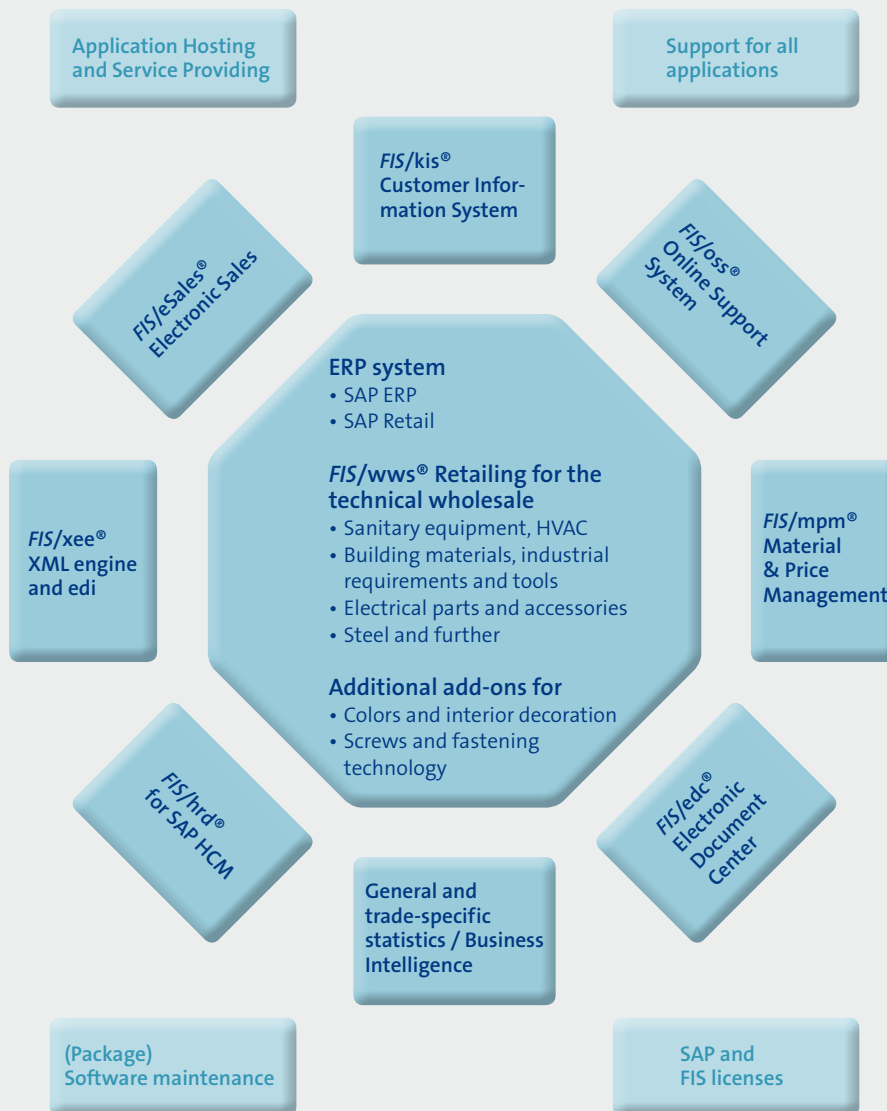
Approved solution and safety of investment

More than 11,000 users from more than 20 enterprises are working with the *FIS/wws*[®] solution in the demanding and fast moving merchant trade.

– The best argument for an approved solution –

As *FIS/wws*[®] as business solution is set up on the basis of the SAP applications (about 84,000 installations) and even the source code is supplied to our customers, the highest independency possible and safety of investment will be enabled in the customer enterprise.

The All-In-One Solution for the Technical Wholesale ...



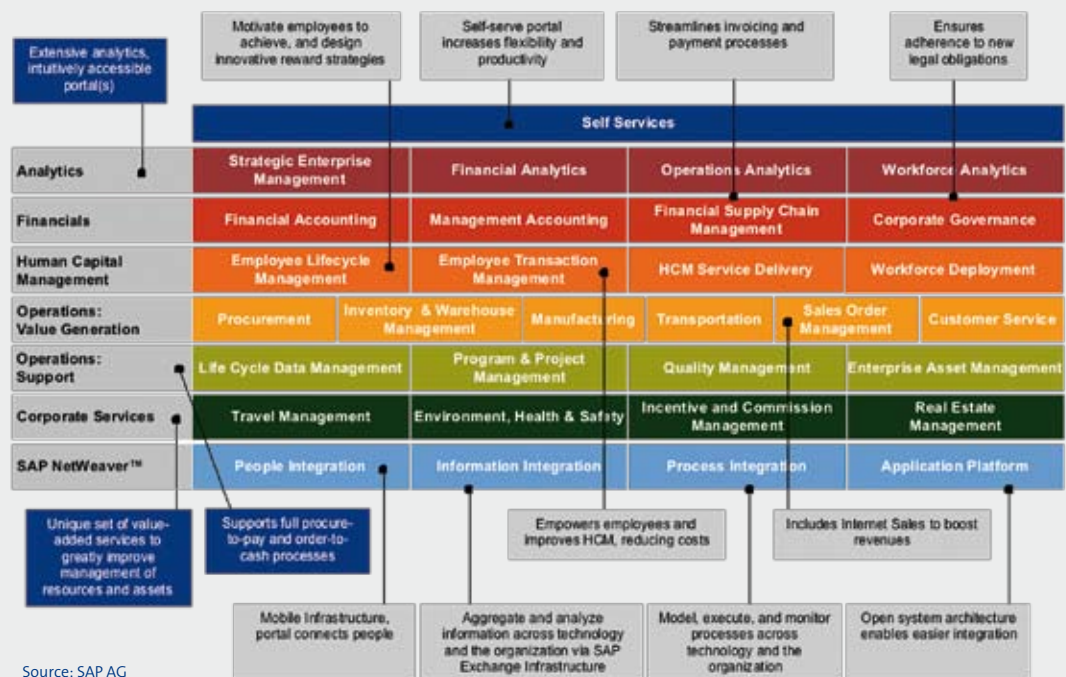
All technologies base on the same software technology.

The integration scenario among SAP ERP and the complementary solutions is pre-configured and supplied by FIS.

All applications and technologies are installed by FIS.

FIS is one-stop-supplier!

... Based on SAP ERP



Due to its functionality in particular, SAP ERP deserves the title “ERP solution of the next generation”. By means of SAP ERP, SAP enhances central SAP R/3 key functions in Financial Accounting, Human Resources Management and logistics on the one hand.

As the new function modules are considerably more comprehensive than before, they are now called Financials, Human Capital Management and Operations. On the other hand, SAP ERP includes functions that were missing in SAP R/3. With Analytics for instance, you will benefit from the approved reporting and planning functions of SAP Business Intelligence.

You might ask: “Why should we decide in favor of SAP ERP?”

Our answer: “Because with SAP ERP, you can

- fulfill the requirements of today’s and future business processes
- make your processes transparent and therefore take substantiated decisions, by means of which you will gain and maintain competitive advantages
- lay the foundation for an Enterprise Service-Oriented Architecture (SOA) and invest in a safe future of the company IT.“

Necessary precondition:

You have to make the strategic decision to change to SAP ERP – not immediately and completely, but step by step and consistently. Thus, you will establish the infrastructure for a successful business development.

FIS/wws[®] Retailing System for HVAC, Building and Civil Engineering Materials ...

Our FIS/wws[®] business solution is designed to guarantee your entrepreneurial success even in the fast moving age of the e-business.

FIS/wws[®] is a business solution on the basis of the SAP operation processes sales (SD) and materials management (MM). SAP products like Business Intelligence supplement the application portfolio.

The functions of FIS/wws[®] are directed at enterprises of the technical wholesale focusing on:

- Sanitary, heating, air conditioning
- Building materials, industrial requirements, tools
- Electrical parts and accessories
- Steel
- Colors and room-decorating
- Screws and fastening technology

All processes in the operative business are supported in the best way possible by extended or new business processes and the optimized integration of distribution with procurement logistics. Fast entry and fast information transactions reduce the entry/processing time and expenses.

Customers' individual processes can be set easily on the basis of FIS/wws[®] Customizing transactions. The industry-specific pre-Customizing for the technical wholesale and retail considerably reduces the time for implementation and consequently the entire expenses for the project.

FIS guarantees for the adaptation of FIS/wws[®] to the latest SAP release levels within the scope of software maintenance.

FIS/wws[®] was developed in accordance with the strict qualification guidelines for partner solutions of SAP AG:

- FIS/wws[®] Premium for logistically demanding requirements profiles

Furthermore, FIS also offers FIS/wws[®] function blocks for the individual problem solving. FIS/wws[®] is currently available in 12 foreign languages: CS, EN, ES, FR, HR, HU, IT, NL, PL, RO, SK and TR.

Due to our increasing international orientation and permanent product development, new language versions are constantly added.



... Automotive and Industrial Requirements as well as Tools

Excerpt from the *FIS/wws*® additional functions supplementing the SAP standard products and covering the core requirements of the technical wholesale.

FIS/wws® SD and shipping

Projects

Data entry, calculation, offer creation and follow-up of project tenders

Calculation

Online calculation of quotations with surcharges or discounts

Stock transfer

Stock transfer or stock transfer proposal from other subsidiaries

Split

Item split with automatic quantity split

Master data

Automatic master data creation for non-listed articles

Route determination

Route determination with extended selection options such as customer, shipping condition or post code

Shipping

Temporal shipping block according to route plan

Release orders

On-time scheduling of release orders

Collection

Products can be collected at the counter/store

SE-Center

SE-Center processing realized by particular document type

Service specifications

Mapping of service specifications in the document and form (print)

Sales prices

Own transaction for fast sales price calculation in commerce

Print functions

Printing of gross/net, with coding, with title summary etc. for quotations

Telesales

Already during the entry of articles inquired by telephone, the person responsible is displayed additional information such as purchasing, profit margin or comparison prices.

Before completing a telephone call, it can be decided which items (articles) are to be saved in which quantity and by means of which document type (quotation, sales order etc.)

Cash sales

Fully-integrated cash functionality (POS systems) with diverse payment methods (cash, EC, credit card, deposit, partial payment etc.)

Rental device processing

Comprehensive support as to the rental of devices, tools etc. Display of availabilities in a Gantt diagram

Materials management

MRP

Extended MRP options enabled by integrated and cross-plant MRP functions

Order quantity

Optimized determination of order quantity enabled by dynamic reorder point

Texts

Text exchange between SD and procurement

Workflow

Used e.g. for queries to the sales department in case of unclear purchase requisitions

Long-term MRP

Foresighted MRP for considerable purchase quantities outside the replenishment lead time

Freight optimization

Review of weight and CPT limits even possible for several orders together

Overview

Cross-plant information for the purchasing department at a glance (ATP, stock, consumption etc.)

Delivery units

Review of packaging conditions relative to vendor and product

Returns

Returns monitor for the integrated processing and monitoring of all returns processes

Warehouse management

For fixed-space, reference and consignment stocks

Doc	Mat	Material Description	Document	Net Qty	UoM	Customer/Plant/Doc	Operation	Delivery	Item Status	St. Quant	Int. Inv. at Oth. Plant	Item/Plant	Pl. No.
887	887	Test article for mass 200g	88700012	20,200	200g	88700012							
887	887	Test article for mass 200g	88700013	19,200	200g	88700013							
887	887	Test article for mass 200g	88700014	19,200	200g	88700014							
887	887	Test article for mass 200g	88700015	19,200	200g	88700015							
887	887	Test article for mass 200g	88700016	19,200	200g	88700016							
887	887	Test article for mass 200g	88700017	19,200	200g	88700017							
887	887	Test article for mass 200g	88700018	19,200	200g	88700018							
887	887	Test article for mass 200g	88700019	19,200	200g	88700019							
887	887	Test article for mass 200g	88700020	19,200	200g	88700020							
887	887	Test article for mass 200g	88700021	19,200	200g	88700021							
887	887	Test article for mass 200g	88700022	19,200	200g	88700022							
887	887	Test article for mass 200g	88700023	19,200	200g	88700023							
887	887	Test article for mass 200g	88700024	19,200	200g	88700024							
887	887	Test article for mass 200g	88700025	19,200	200g	88700025							
887	887	Test article for mass 200g	88700026	19,200	200g	88700026							
887	887	Test article for mass 200g	88700027	19,200	200g	88700027							
887	887	Test article for mass 200g	88700028	19,200	200g	88700028							
887	887	Test article for mass 200g	88700029	19,200	200g	88700029							
887	887	Test article for mass 200g	88700030	19,200	200g	88700030							

FIS/wws® – Returns monitor

Cross-standard features

DATANORM

FIS/wws® complies with the DATANORM standard function in display and data exchange

GAEB

Importing and sending data and information in GAEB certainly belongs to the standard

FIS/xee® XML Engine and edi for SAP ERP

Today, most companies make use of different application systems for diverse business tasks: ERP systems, WM systems as well as order picking and transport systems, e-shop solutions, mobile sales applications etc. Additionally, electronic messages are exchanged with external partners such as customers or vendors. The IT challenge is the integration of these systems and communication with external systems, i.e. EAI Enterprise Application Integration. FIS/xee®, the efficient EAI server, supports you in these integration and communication processes and assists you in tapping the resulting energies.

FIS/xee® is a user-friendly and safe EAI system and runs on the basis of the standard software SAP ERP.

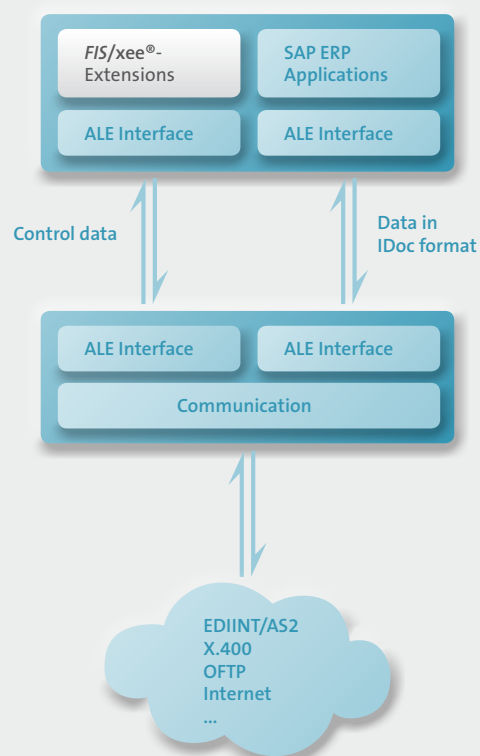
Of course, our FIS/xee® has been certified by SAP AG, Walldorf – which is a further quality characteristic.

Using FIS/xee® enables:

- Accelerating the performance process by overcoming system interfaces and additional tasks involved such as new data entry, copy, manual control etc.
- Increasing the process quality by using reasonable automation in connection with correspondingly efficient IT systems (e.g. automatic sending of delivery and invoicing data)
- The B2B exchange of any business data among the SAP ERP system and external systems
- Maintaining a safe data transfer via physical separation of the productive system from the internet

The FIS/xee® system is directed at all enterprises using SAP ERP and requiring a safe and cost-saving data exchange via diverse systems. No matter if you realize it via VDA, EDIFACT, ANSI X.12, XML etc., the FIS/xee® system supports all standard formats, even user-defined in-house formats.

As FIS/xee® is integrated as add-on in SAP ERP, the configuration and administration can be directly executed in your familiar SAP environment.



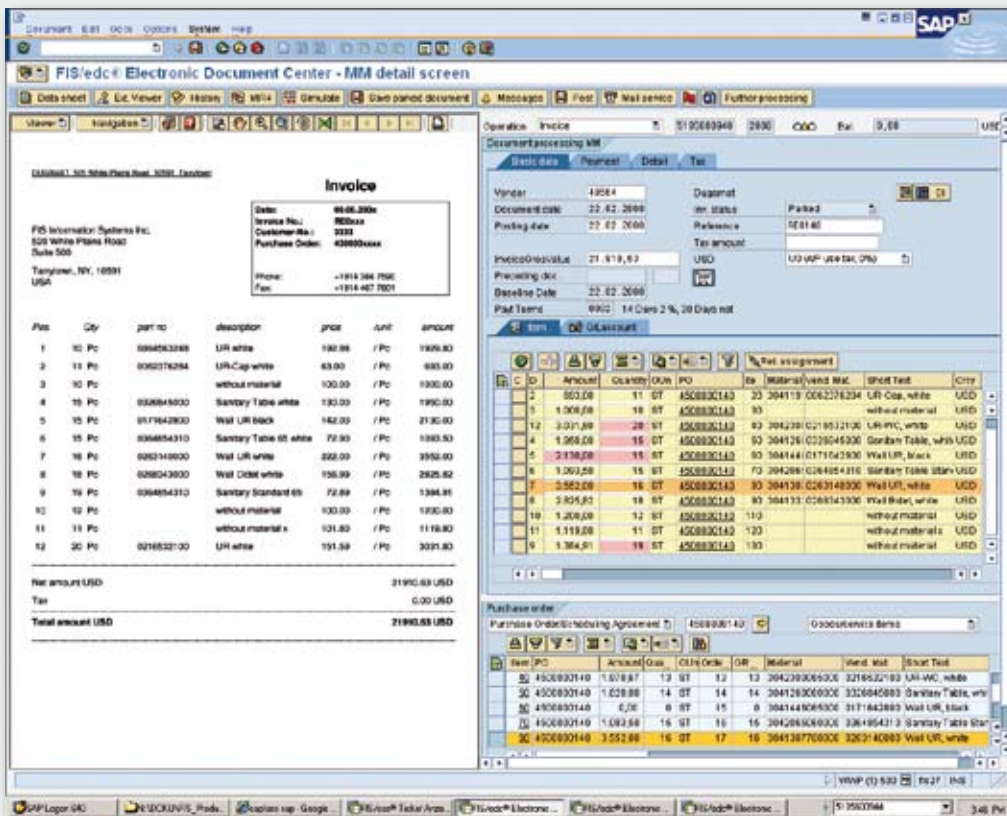
FIS/edc[®] Electronic Document Center

FIS/edc[®] is a fully SAP ERP-integrated and modularly structured application for the automated processing of EDI messages and scanned OCR documents. Thus, the existing processes can be further optimized, combined with a fast Return on Investment.

By using FIS/edc[®], a clearly quantitative benefit is achieved, because the invoice verification process is created optimally in its efficiency and productivity.

FIS/edc[®] comprises the two main functional components:

- FIS/edc[®] OCR monitor for the comfortable processing of scanned documents (e.g. incoming invoices)
- FIS/edc[®] EDI monitor for the efficient processing of inbound EDI messages and/or documents



Detail screen FIS/edc[®] – Invoice monitor

***FIS/edc*[®] OCR monitor**

The advantages of the *FIS/edc*[®] OCR monitor become transparent at the example of the incoming invoice processing:

- Automatic posting of the invoices, possible with and without PO reference
- Full integration into the SAP system with handling of all standard tables
- Item matching in IDoc conversion (the monitor offers even invoice items not included in the PO for processing)
- Integrated mail and approval procedure with full history
- Comfortable post-processing options in split-screen procedure with direct access to the scanned invoice (TIFF format)
- Modern processing tools like drag & drop for matching items, quantities and values
- Filter for critical, cash-discount based deadlines
- Direct corrective options of the quantity and value fields
- Status management with traffic light symbols
- Specific assignment of the worklist to named users
- Visualization of EDI messages as forms
- Evaluations
- Logging of all user actions and processes

***FIS/edc*[®] EDI monitor**

The technically oriented screen of EDI documents of the IDoc (Intermediate Document) is enhanced by a user-friendly display. For processing, the same functions as in the *FIS/edc*[®] OCR monitor are available.

FIS/eSales® Electronic Sales with SAP ERP

FIS/eSales® is an efficient shop solution for Internet sales. It is suitable for business transactions in the business area (B2B) as well as in the consumer's area (B2C).

The communication of *FIS/eSales*® with the SAP ERP system is supported by pre-configured communication functions for the offer and order processing. For the exchange of master data from SAP ERP system to *FIS/eSales*®, there are adequate functions for creation and update including filter functions for the reduction of respective data volume.

FIS/eSales® is an intuitively and comfortably operated shop solution. Using *FIS/eSales*® in the B2B area is a typical application. Consequently, the retailer for instance can order the required articles online from the wholesaler around the clock. The realization is effected on the basis of the latest SAP technology (SAP NetWeaver).

For smaller offering enterprises, *FIS/eSales*® is suitable especially due to its low implementation costs and its intuitive handling. A particular client software is not required and the technical requirements are kept to a minimum – for you and your business partners.

Thus, the offering enterprises have the option of connecting business partners to the logistics system even outside the usual business hours. Thus, no system interfaces will occur during data transfer and relative downtimes of your OLTP systems are used efficiently.

Innovative product characteristics at a glance

Personalized initial screen

Access is personalized by language-independence, a personal greeting of the customer as well as assignment of the user with name, communication data and photo.

Catalogue Functions

Browsing functions as well as global search functions concerning all characteristics in the catalogue are as self-evident as the display of MIME objects and scale prices.

Document display

Quotations, order status, delivery and invoicing data as well as credit notes and open items of the accounting can be traced.

User administration

The customer is enabled to independently set up and maintain further users. A predefined role concept for the differentiation of authorizations is supported.

Shopping basket

Integrated availability check and the display of the customer-specific prices are features of the "shopping basket". Pre-configured delivery addresses can be selected or re-entered. The transfer of order number, shipping conditions, customer-specific order texts as well as the print of an order receipt confirmation enhance the functional scope.



FIS/eSales® – B2B initial page

FIS/mpm[®] Material & Price Management

FIS/mpm[®] (=Material & Price Management) is an add-on to the SAP ERP or SAP Retail System, which can be used to create and/or maintain master data quickly and without much effort. The modularly structured FIS product FIS/mpm[®] is fully integrated into the SAP environment and offers a comfortable processing option for article master data and prices and/or conditions with its modules.

Functional scope

Module - data transfer tool

With the data transfer tool, article master data and purchasing info record data as well as prices and conditions can be imported from different sources (e.g. xls or csv files) and processed as SAP data records. The creation of the import files can be individually adjusted to customer requests by means of flexible settings. Thus, it is ensured that users without SAP knowledge can use the tool as well.

Module - master data maintenance tool

This module includes a master data maintenance via MS Excel as well as a data maintenance integrated into the SAP ERP environment. During the MS Excel master data maintenance, SAP master data are extracted to MS Excel, further processed there and afterwards updated directly in SAP ERP. In the integrated master data maintenance version, worklists from the SAP data base are created for the processing in FIS/mpm[®]. A comfortable user interface is ensured by the maintenance of user-specific layouts. Furthermore, comprehensive maintenance functions and fast changes are available. Thus, the maintenance effort is considerably reduced. After release of the processed records, the master data are processed in SAP ERP.

Module - fast entry of articles

On a maintenance screen, all relevant article data can be created in the dialog. The user defines which data are required. By means of the flexible definition of default data, the maintenance effort can be further reduced. Via subsequent functions, a purchasing info record, a source list entry and also a purchase and/or sales price can be maintained immediately.

Module - price maintenance tool

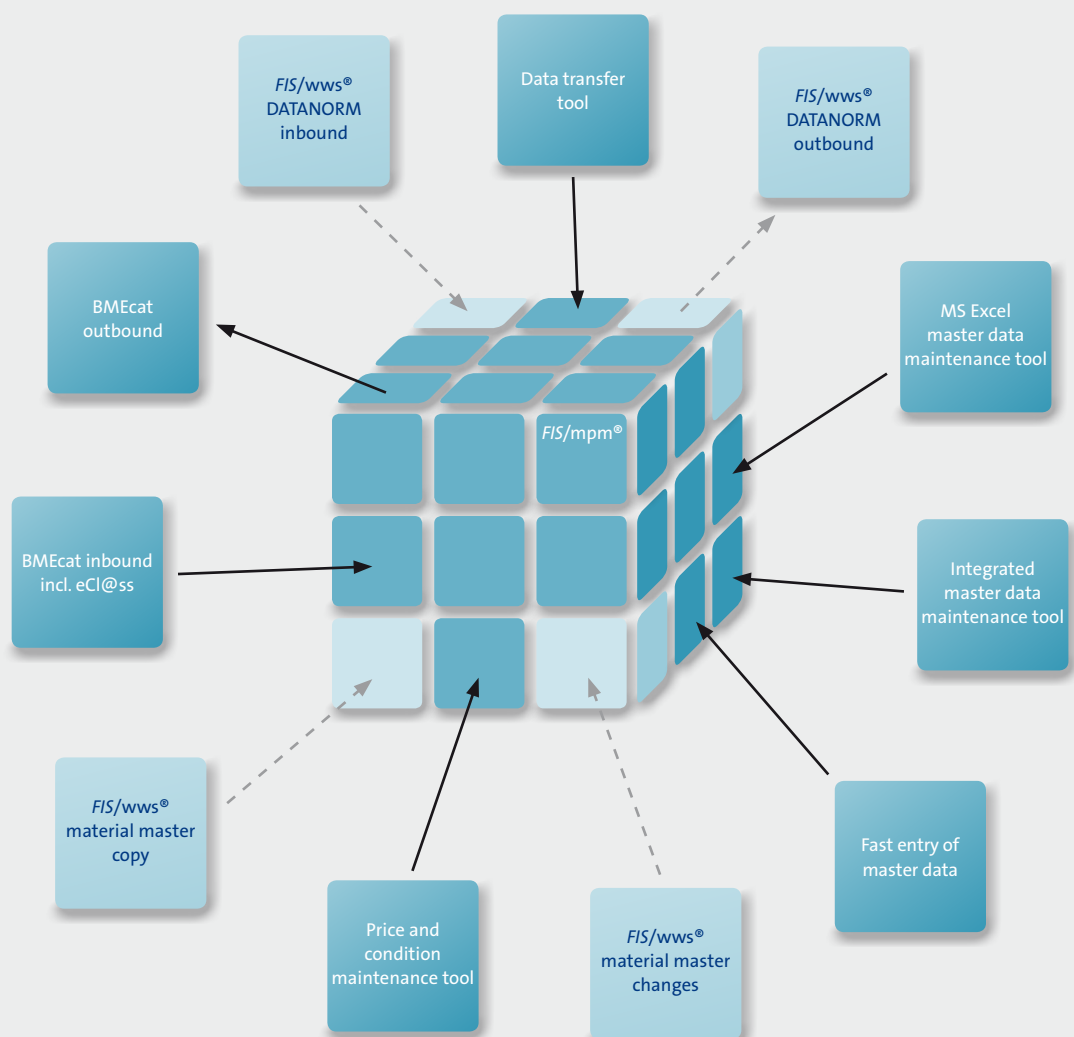
By means of this tool, conditions (prices, discounts, surcharges etc.) for the area of purchasing as well as sales can be quickly and flexibly created and maintained.

Modules - BMEcat inbound including eCI@ss and BMEcat outbound

The standard developed by the Bundesverband für Materialwirtschaft und Einkauf (BME / "Federal Association of Materials Management and Purchasing") supports the exchange of electronic product catalogs between customers and vendors and is mapped in FIS/mpm[®].

Innovative product characteristics at a glance

- Tailored to the requirements of the technical wholesale
- Full integration into SAP at ERP as well as retail level
- Separated data retention in own tables independent from the operative business (FIS shadow database)
- Considerable effort reduction in the creation and/or maintenance of master data and prices/conditions
- Improved and more current data quality as well as lower error rate by means of standardized inbound interfaces
- Prevention of redundant data by means of duplicate checks
- Central administration of master data including multimedia-based data
- Use of the FIS shadow data base for logistics processes
- Modular structure with acquisition of individual modules



FIS/hrd® Human Capital Management

Originally planned as a tool for copying personnel numbers, *FIS/hrd*® CCC has meanwhile further developed into a comprehensive tool for transferring any kind of HCM data with anonymization and conversion function. The product family is supplemented by functions for the set of rules development capable of revisions and versionings with extensive analysis functions in the *FIS/hrd*® SRA component as well as a terminal administration in the *FIS/hrd*® TRM component.

FIS/hrd® supports you in the various tasks accruing in the area of Human Capital Management – also in your company. In the everyday work, fiscal year change activities, support packages, release upgrades or the combination and spin-off of company parts, *FIS/hrd*® quickly proves to be an indispensable tool. Intuitive operation and clear display will give you the necessary security for working with *FIS/hrd*®. The central instance for the components of the family is the *FIS/hrd*® manager.



SAP HCM - *FIS/hrd*® CCC: Copy · Compare · Convert

- Transfer of HR and object data
- Problem solving also outside production systems
- Creation of test and training data
- Support in SP and release upgrades
- Data conversion
- Client/system combination or separation

SAP HCM - *FIS/hrd*® SRA: Scheme and Rule Analyzer

- Clear display and evaluation
- Support in analysis and maintenance
- Versioning of schemes and rules, version management
- Development capable of revisions by means of note function
- Matching support
- Support in payroll analysis
- Support in error search

SAP HCM - *FIS/hrd*® TRM: Time Recording Management

- Administration of terminals with their characteristics and assignments
- Assignment of employees to master terminals
- Enhanced evaluation options
- Operation directly from the SAP system

FIS/oss® Online Support System and Application Support

The **FIS/oss® Online Support System** is a modern, intuitively-operated ticket system for support tasks, which has been developed as add-on to the SAP standard software.

A support request (ticket) combines the usually manual recordings (correspondence, file creations, processing effort and transport requests) in one object. The effort relative to the harmonization of the processing persons, e.g. due to a distributed information storage, is redundant.

Evaluable status fields always inform about the processing status of a ticket.

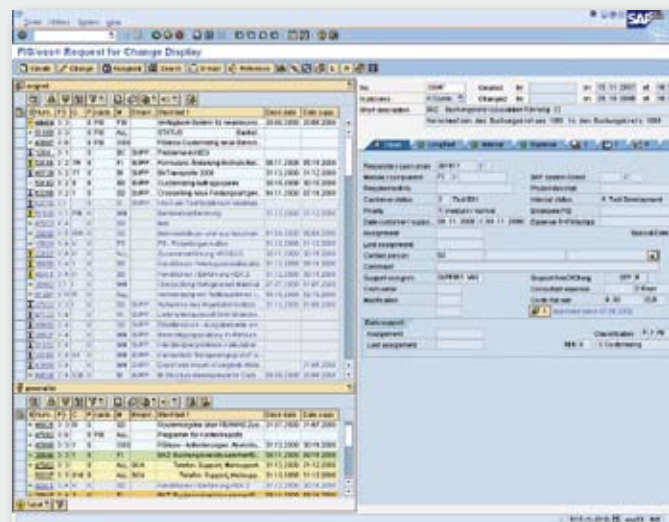
A comfortable search function, change documents, e-mail function, KPIs, an RFC interface and many more functions enhance the options and considerably facilitate the processing.

The support by **FIS GmbH** comprises all services applied to the support of productive SAP installations.

Via the support center, the desired assistance can be called directly in **FIS/oss®** by telephone, internet, e-mail or by creating a ticket.

In the FIS support center, there are more than 50 competent and dedicated SAP experts with long-time experience, who assist our customers by means of professional consultation. We are available almost round the clock.

A **FIS/oss®** system can be adjusted very comfortably to individual requirements and enterprise structures via flexible Customizing.



FIS/oss® – Support request

By means of efficient support of the customers in the internal know-how creation and transfer, the FIS support center considerably contributes to the low-cost operation of the customer-specific software solutions. Via a professional and complete management of the applications, bottlenecks can be recognized in time, problem solutions can be developed and downtimes can be avoided early. **FIS/oss®** is used as change management system.

FIS/kis[®] Customer Information System

FIS/kis[®] is the central application platform in order to call all current and relevant customer-specific data independent of location and device. Thus, the field service is supported ideally in its daily work.

The customer master data stored in SAP ERP form the data basis. These data are permanently maintained on the latest status within freely selectable time intervals. In addition, these customer master data can be enhanced optionally by so-called “soft data” such as e.g. annotations concerning the customer, annotations concerning the contact person, infrastructure data etc.

The data entry can be effected free-form or can be supported by pre-configured list box entries. A detailed authorization check assures that the existing customer information will only be displayed and/or changed by the assigned user group. Both the creation of dependency knowledge and the calculation of the customer potential as well as its exhaustion are supported.

The creation of selection lists in accordance with freely choosable selection criteria as well as the option of creating pdf documents including all FIS/kis[®] customer information enhances the functionalities of FIS/kis[®].

Highlights

- Access with personalized registration via well-established web-browser
- Administration of most different data areas such as
 - Master and marketing data
 - Statistics
 - Accounting and planning data
- Maintenance of business contacts and actions
- Display of statistics from SAP BI and/or SAP ERP VIS
- Interface to SAP BI web queries
- Interface for further evaluation in MS Excel
- Display of SAP ERP document information
- Display of SAP ERP classification data
- Realization on the basis of the latest SAP technology (SAP NetWeaver)

FIS-ASP Application Service Providing und IT-Outsourcing GmbH (hereinafter referred to as FIS-ASP) is a subsidiary of FIS. The operation of SAP solutions is the core business of FIS-ASP.

The FIS-ASP clientele predominantly is the technical wholesale and the industry (automotive, mechanical engineering, building materials). We operate the systems of both group-organized customers and medium-sized enterprises in our data centers. FIS-ASP is located in Grafenrheinfeld near Schweinfurt. At this site, FIS-ASP maintains several outsourcing operation centers in round-the-clock shift mode (7x24).

Since 1997, the enterprises FIS GmbH and FIS-ASP have been operating productive SAP systems in the scope of company service level agreements. As special strength in the data center operation, FIS-ASP focuses on the SAP application. As one of few vendors, FIS-ASP, together with its parent company FIS GmbH, is not only able to offer technical operational services, but also to maintain and to support the SAP application in a competent way.

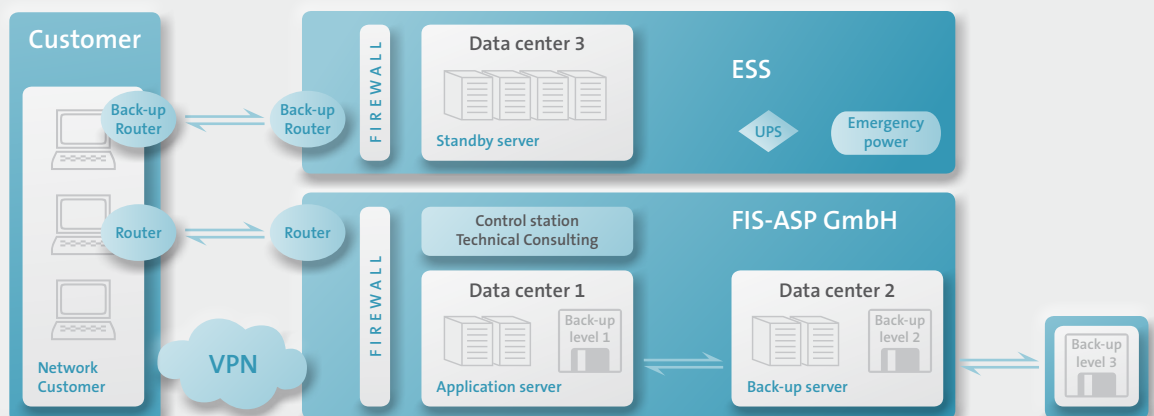
The scope of services of FIS-ASP comprises all variants of ASP services:

- Outsourcing and Application Hosting
- Application Service Providing
- Outtasking
- Business Process Outsourcing

It does not matter if you want to outsource your entire IT infrastructure or continue to operate a data center for strategic reasons, but do not want to control the complex system operation, search for a cost-saving variant to work with the SAP application or want to outsource entire business processes such as payroll, we can certainly offer the appropriate solution to you.

Do you still invest constantly in personnel, training and further training, hard- and software, backup systems, data center technology, security etc.?

Transfer your entire application systems together with infrastructure into our operation centers now; our IT specialists take care of administration and support to simplify IT so that you can fully concentrate on your core business.



Our Products

- **FIS/wws[®]**
Retailing for the technical wholesale
- **FIS/xee[®]**
XML engine and edi for SAP ERP
- **FIS/edc[®]**
Automated incoming invoice processing and further processing in SAP ERP
- **FIS/eSales[®]**
The shop for Internet distribution
- **FIS/mpm[®]**
Material & Price Management
- **FIS/hrd[®]**
Safe testing in the area of Human Capital Management
and revision-proof development of Customizing
- **FIS/oss[®]**
Online support system for the application support
- **FIS/kis[®]**
Customer Information System
- **FIS/intcom[®]**
Linkage software for third-party systems



FIS, FIS/wws[®], FIS/xee[®], FIS/edc[®], FIS/eSales[®], FIS/mpm[®], FIS/hrd[®], FIS/oss[®], FIS/kis[®] and FIS/intcom[®] are registered trademarks of FIS GmbH, Grafenrheinfeld. All other products are registered or not registered trademarks of the respective companies.

FIS GmbH

FIS Informationssysteme and Consulting GmbH (FIS) is an independent company with currently approx. 300 employees focusing on SAP projects. We develop separate solutions completing SAP standard software products in a meaningful way and completely covering the core requirements of the technical wholesale by means of industry-specific function packages. However, they can also play an essential role in other SAP user companies in the application environment.

Being a Service House for the technical wholesale, FIS is the ideal partner for the planning of systems, their infrastructure and implementation up to the support after going live. All software systems and tools offered by SAP are consulted, supported and licensed by FIS GmbH.

FIS is SAP system house with “Gold” status, representing the top-level partner form of SAP AG.

An efficient method and QM concept ensures the consultation quality of the projects.

FIS is one of the few consulting companies being DIN EN ISO 9001 certified.

On January 01, 2001, FIS founded its first subsidiary, FIS-ASP Application Service Providing und IT-Outsourcing GmbH (FIS-ASP). FIS-ASP is a service company for Application Hosting, Outsourcing as well as Out-tasking of SAP systems for industry, trade and service companies.

FIS together with its subsidiary FIS-ASP is one of the very few Full Service providers for SAP applications.

The branch office “Rhein-Main” in Offenbach, opened on July 01, 2005, focuses on document reading and document management.

On April 01, 2007, the second FIS branch office opened in Stuttgart-Leonberg. Skilled employees offer competent consulting and demanding services around SAP for medium-sized businesses. The core business of this branch office focuses on “Template” projects based on the FIS industry solution for the technical wholesale.

On January 01, 2008, the branch office in the USA started its business activities. The subsidiary “FIS Information Systems Inc.” is based in Tarrytown, New York, approx. 50 km to the north of New York City. First of all, document management solutions and master data projects are to promote the business.

On June 03, 2008, FIS took over SST “Software Solutions Team Sp. z o.o.”, based in Gliwice, Upper Silesia/Poland. Thus, FIS has a subsidiary for the region of Poland – Hungary – Czech Republic – Slovakia. The company employs highly qualified personnel (IT specialists/engineers) and is active in the fields of SAP, Java and .NET.



Headquarters of FIS, Grafenrheinfeld



**FIS Informationssysteme
und Consulting GmbH**

Röthleiner Weg 1
D-97506 Grafenrheinfeld
Tel.: +49 97 23 / 91 88-0
Fax: +49 97 23 / 91 88-100
info@fis-gmbh.de
www.fis-gmbh.de

Rhein-Main branch office
Sprendlinger Landstraße 178
D-63069 Offenbach

Branch office Stuttgart-Leonberg
Mollenbachstraße 33-35
D-71229 Leonberg

Subsidiary
**FIS-ASP Application Service Providing
und IT-Outsourcing GmbH**
Röthleiner Weg 4
D-97506 Grafenrheinfeld

Subsidiary
FIS Information Systems Inc.
520 White Plains Road, Suite 500
Tarrytown, NY, 10591, USA

Subsidiary
Software Solutions Team Sp. z o.o.
ul. Bojkowska 37
PL 44-101 Gliwice