

FIS/xee®
XML Engine and edi for SAP ERP

Integration Made Easy

References

– The Best Proof



RICHTER + FRENZEL

Richter + Frenzel GmbH & Co. KG
HVAC wholesale, Augsburg



Maler-Einkauf Süd-West eG
Wholesale for colors and room-decorating,
Wiesbaden



Conrad Electronic SE
Electronic multichannel provider, Hirschau



Maschinenfabrik ALFING KESSLER GmbH
Manufacturer of high-performance crank shafts,
Aalen



The Nuance Group AG
Operators of airport shops, Glattpfugg (Switzerland)



Deutsche Steinzeug Cremer & Breuer AG
Ceramics manufacturer, Frechen



Essex Pharma GmbH
Pharmaceutical enterprise, Munich

The All-In-One Solution for the Technical Wholesale



All technologies base on the same software technology.
 The integration scenario among SAP ERP and the complementary solutions is pre-configured and supplied by FIS.
 All applications and technologies are installed by FIS.

FIS is one-stop-supplier!

FIS/xee® XML Engine and edi for SAP

Today, complex business processes are mapped in a service-oriented way in the IT. In doing so, most different application systems are connected with each other within your company: ERP systems, warehouse management, picking and transport systems, e-shop solutions, mobile sales applications and many more. These processes are continued across company limits and include your business partners by means of electronic data interchange (EDI).

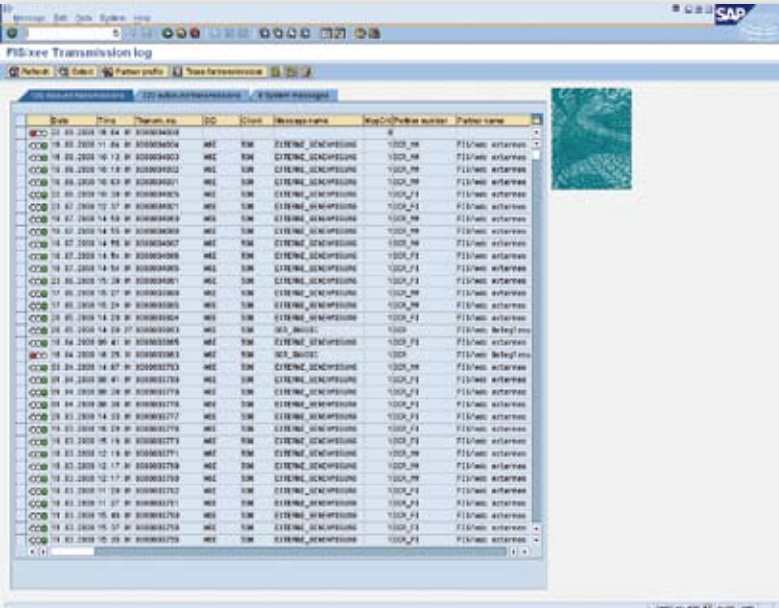
One of the big challenges of the IT is the integration of heterogeneous system landscapes, i.e. EAI – Enterprise Application Integration – within your company (A2A) as well as with your business partners (B2B).

FIS/xee®, the efficient EAI server, supports you in these integration and communication tasks and offers you a flexible platform for mapping your internal system landscapes as well as your business partner relationships safely and efficiently.

FIS/xee® is a user-friendly and safe EAI system certified by SAP AG, Walldorf, for the electronic exchange of data, documents and news, based on SAP.

It enables

- The acceleration of the value chain by overcoming system interfaces and the additional tasks involved such as new data entry, copy, manual control etc.
- The increase of the process quality by using reasonable automation in connection with correspondingly efficient IT systems (e.g. automatic sending of delivery and invoicing data).
- The B2B exchange of any business data via the SAP ERP system and external systems by means of the integrated XML interface and the variable conversion via the efficient converter.



Date	Time	Thruout no.	IDC	Class	Message name	MsgCol/Partner name	Partner name
03.03.2010	18:04	0100000000					
03.03.2010	17:54	0100000000	ME	336	EXTENDED_DOCUMENT	1000_M	FIS/xei asterwa
03.03.2010	17:52	0100000000	ME	336	EXTENDED_DOCUMENT	1000_M	FIS/xei asterwa
03.03.2010	17:50	0100000000	ME	336	EXTENDED_DOCUMENT	1000_M	FIS/xei asterwa
03.03.2010	17:48	0100000000	ME	336	EXTENDED_DOCUMENT	1000_M	FIS/xei asterwa
03.03.2010	17:46	0100000000	ME	336	EXTENDED_DOCUMENT	1000_M	FIS/xei asterwa
03.03.2010	17:44	0100000000	ME	336	EXTENDED_DOCUMENT	1000_M	FIS/xei asterwa
03.03.2010	17:42	0100000000	ME	336	EXTENDED_DOCUMENT	1000_M	FIS/xei asterwa
03.03.2010	17:40	0100000000	ME	336	EXTENDED_DOCUMENT	1000_M	FIS/xei asterwa
03.03.2010	17:38	0100000000	ME	336	EXTENDED_DOCUMENT	1000_M	FIS/xei asterwa
03.03.2010	17:36	0100000000	ME	336	EXTENDED_DOCUMENT	1000_M	FIS/xei asterwa
03.03.2010	17:34	0100000000	ME	336	EXTENDED_DOCUMENT	1000_M	FIS/xei asterwa
03.03.2010	17:32	0100000000	ME	336	EXTENDED_DOCUMENT	1000_M	FIS/xei asterwa
03.03.2010	17:30	0100000000	ME	336	EXTENDED_DOCUMENT	1000_M	FIS/xei asterwa
03.03.2010	17:28	0100000000	ME	336	EXTENDED_DOCUMENT	1000_M	FIS/xei asterwa
03.03.2010	17:26	0100000000	ME	336	EXTENDED_DOCUMENT	1000_M	FIS/xei asterwa
03.03.2010	17:24	0100000000	ME	336	EXTENDED_DOCUMENT	1000_M	FIS/xei asterwa
03.03.2010	17:22	0100000000	ME	336	EXTENDED_DOCUMENT	1000_M	FIS/xei asterwa
03.03.2010	17:20	0100000000	ME	336	EXTENDED_DOCUMENT	1000_M	FIS/xei asterwa
03.03.2010	17:18	0100000000	ME	336	EXTENDED_DOCUMENT	1000_M	FIS/xei asterwa
03.03.2010	17:16	0100000000	ME	336	EXTENDED_DOCUMENT	1000_M	FIS/xei asterwa
03.03.2010	17:14	0100000000	ME	336	EXTENDED_DOCUMENT	1000_M	FIS/xei asterwa
03.03.2010	17:12	0100000000	ME	336	EXTENDED_DOCUMENT	1000_M	FIS/xei asterwa
03.03.2010	17:10	0100000000	ME	336	EXTENDED_DOCUMENT	1000_M	FIS/xei asterwa
03.03.2010	17:08	0100000000	ME	336	EXTENDED_DOCUMENT	1000_M	FIS/xei asterwa
03.03.2010	17:06	0100000000	ME	336	EXTENDED_DOCUMENT	1000_M	FIS/xei asterwa
03.03.2010	17:04	0100000000	ME	336	EXTENDED_DOCUMENT	1000_M	FIS/xei asterwa
03.03.2010	17:02	0100000000	ME	336	EXTENDED_DOCUMENT	1000_M	FIS/xei asterwa
03.03.2010	17:00	0100000000	ME	336	EXTENDED_DOCUMENT	1000_M	FIS/xei asterwa

FIS/xee® – Transmission log

FIS/xee[®] Communication Types

Makes the Internet a Safe Transfer Method

Communication Types

In the B2B message exchange, there are numerous communication types. Especially via the Internet, you are constantly confronted with new interfaces without the existing ones becoming redundant.

The *FIS/xee*[®] philosophy is to continue supporting established communication channels and to be open for new standards. For it is good to have the security of always being able to offer the appropriate interface to new business partners.

FIS/xee[®] supports the following interfaces:
ODBC, eMail (SMTP), FTP, HTTP/HTTPS, EDIINT, AS2, WebSphere MQ (IBM), File-Interface, SAP, X.400, OFTP.

Makes the Internet a safe transfer method

The Internet is the communication medium that is available almost everywhere and without additional costs. By implementing EDIINT AS2, *FIS/xee*[®] makes the Internet a safe and reliable transfer method for EDI data. In doing so, *FIS/xee*[®] relies on state-of-the-art coding procedures for the communication as well as for the message itself. Digital signatures provide for a data check concerning their integrity and authorship. Thus, you can do without expensive point-to-point or VAN connections without any risk.

It goes without saying that existing services such as T-Systems Business Mail (Telebox x.400) can be safely connected via Secure TCP7IP as well. Thus, further hardware costs and additional fees for the data transfer become redundant.

FIS/xee® Easy Access Highlights

Easy Access

For companies with few communication partners, we also offer the *FIS/xee®* Small Business Version, i.e. a cost-saving alternative to the *FIS/xee®* Full Version.

FIS/xee® Small Business is functionally identical with the *FIS/xee®* Full Version, but is restricted to the data exchange with three partners.

Highlights

- Via SAP monitoring transactions, the status of the *FIS/xee®* system can be determined at a glance by means of “traffic lights”
- Administration of your mappings, message structures, certificates in SAP - thus, you are protected from data loss and have the option of versioning
- Activating the time control enables the sending and receiving of messages at freely-definable times and intervals
- All SAP transactions are realized in their own namespace in a maintenance-friendly way so that there will not be any additional expense in case of SAP release upgrades
- The hardware costs for the *FIS/xee®* system are low (customary PC)
- Your third-party systems exchanging data, documents and messages can also benefit from *FIS/xee®* – they are supported with the same advantages as an SAP system
- With the efficient converter, even complex algorithms can be displayed within a short time
- ODBC functions are integrated in the converter.

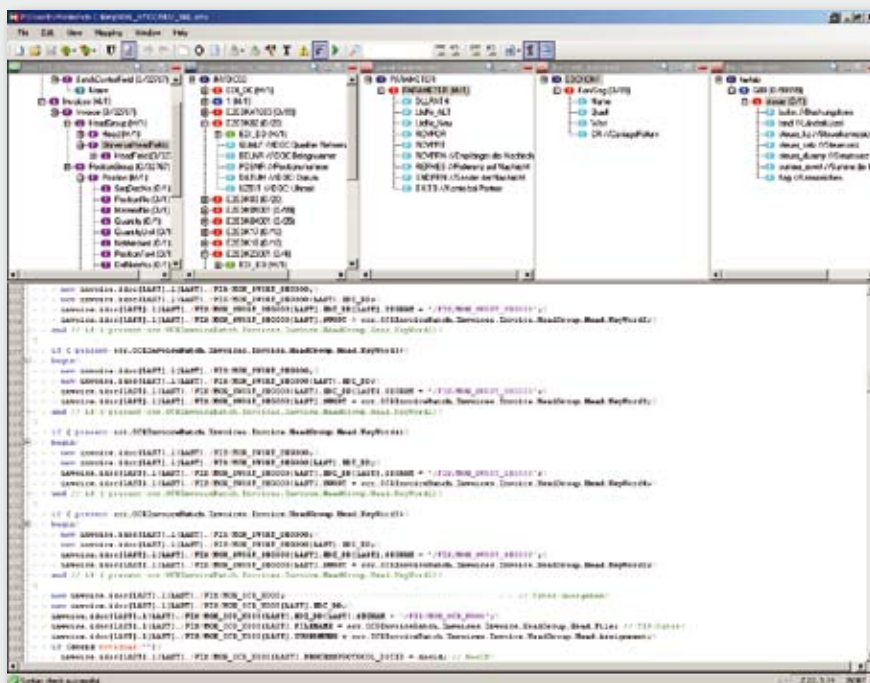


FIS/xee® – Menu

FIS/xee® Workbench

If you use individual message formats or require standard adjustments, you will be able to realize this yourself very easily:
With the FIS/xee® Workbench, the comfortable tool for the creation and conversion of messages.

It enables the quick and easy development or adjustment of data formats.
Thus, you will reduce costs and flexibly react to changes in EDI with your business partners.



FIS/xee® – Workbench

You do not require any programming knowledge in order to display mappings with simple field allocations up to complex algorithms.

In doing so, you are supported by

- A comprehensive function library
- The graphic display of the mapping
- Mapping by means of Drag&Drop
- The integrated test environment for your conversions

The structure editor of the FIS/xee® Workbench allows you the flexible definition of own message structures and the fast change of existing structures.

XML definitions can be comfortably imported, the IDOC format can be read directly. Thus, the manual creation of the format descriptions remains an exception!

The created conversions will be saved in the SAP system in a clearly arranged data administration including version management and archiving. From there, they can be installed and updated in the FIS/xee® subsystem.

FIS/intcom[®] Linkage Software for Third-Party Systems

FIS/intcom[®] – the ideal solution for a quickly realizable connection to SAP ERP. High throughput and a small overhead are the characteristics of this product.

FIS/intcom[®] is the modern and cost-saving communication software for the linkage of a third-party system with SAP ERP. The third-party system can be an electronic scale, a machine tool, a BDE and/or MDE system or a WM system.

The format conversion between the third-party system and SAP ERP is made by the efficient FIS converter. *FIS/intcom*[®] is fully integrated into the SAP environment and supports the internal communication within enterprises with a partner or third-party system.



Our Products

- **FIS/wws[®]**
Retailing for the technical wholesale
- **FIS/xee[®]**
XML engine and edi for SAP ERP
- **FIS/edc[®]**
Automated incoming invoice processing and further processing in SAP ERP
- **FIS/eSales[®]**
The shop for Internet distribution
- **FIS/mpm[®]**
Material & Price Management
- **FIS/hrd[®]**
Safe testing in the area of Human Capital Management
and revision-proof development of Customizing
- **FIS/oss[®]**
Online support system for the application support
- **FIS/kis[®]**
Customer Information System
- **FIS/intcom[®]**
Linkage software for third-party systems



FIS, FIS/wws[®], FIS/xee[®], FIS/edc[®], FIS/eSales[®], FIS/mpm[®], FIS/hrd[®], FIS/oss[®], FIS/kis[®] and FIS/intcom[®] are registered trademarks of FIS GmbH, Grafenrheinfeld. All other products are registered or not registered trademarks of the respective companies.

FIS GmbH

FIS Informationssysteme and Consulting GmbH (FIS) is an independent company with currently approx. 300 employees focusing on SAP projects. We develop separate solutions completing SAP standard software products in a meaningful way and completely covering the core requirements of the technical wholesale by means of industry-specific function packages. However, they can also play an essential role in other SAP user companies in the application environment. Being a Service House for the technical wholesale, FIS is the ideal partner for the planning of systems, their infrastructure and implementation up to the support after going live. All software systems and tools offered by SAP are consulted, supported and licensed by FIS GmbH.

FIS is SAP system house with “Gold” status, representing the top-level partner form of SAP AG.

An efficient method and QM concept ensures the consultation quality of the projects.

FIS is one of the few consulting companies being DIN EN ISO 9001 certified.

On January 01, 2001, FIS founded its first subsidiary, FIS-ASP Application Service Providing und IT-Outsourcing GmbH (FIS-ASP). FIS-ASP is a service company for Application Hosting, Outsourcing as well as Out-tasking of SAP systems for industry, trade and service companies.

FIS together with its subsidiary FIS-ASP is one of the very few Full Service providers for SAP applications.

The branch office “Rhein-Main” in Offenbach, opened on July 01, 2005, focuses on document reading and document management.

On April 01, 2007, the second FIS branch office opened in Stuttgart-Leonberg. Skilled employees offer competent consulting and demanding services around SAP for medium-sized businesses. The core business of this branch office focuses on “Template” projects based on the FIS industry solution for the technical wholesale.

On January 01, 2008, the branch office in the USA started its business activities. The subsidiary “FIS Information Systems Inc.” is based in Tarrytown, New York, approx. 50 km to the north of New York City. First of all, document management solutions and master data projects are to promote the business.

On June 03, 2008, FIS took over SST “Software Solutions Team Sp. z o.o.”, based in Gliwice, Upper Silesia/Poland. Thus, FIS has a subsidiary for the region of Poland – Hungary – Czech Republic – Slovakia. The company employs highly qualified personnel (IT specialists/engineers) and is active in the fields of SAP, Java and .NET.



Headquarters of FIS, Grafenrheinfeld



**FIS Informationssysteme
und Consulting GmbH**

Röthleiner Weg 1
D-97506 Grafenrheinfeld
Tel.: +49 97 23 / 91 88-0
Fax: +49 97 23 / 91 88-100
info@fis-gmbh.de
www.fis-gmbh.de

Rhein-Main branch office
Sprendlinger Landstraße 178
D-63069 Offenbach

Branch office Stuttgart-Leonberg
Mollenbachstraße 33-35
D-71229 Leonberg

Subsidiary
**FIS-ASP Application Service Providing
und IT-Outsourcing GmbH**
Röthleiner Weg 4
D-97506 Grafenrheinfeld

Subsidiary
FIS Information Systems Inc.
520 White Plains Road, Suite 500
Tarrytown, NY, 10591, USA

Subsidiary
Software Solutions Team Sp. z o.o.
ul. Bojkowska 37
PL 44-101 Gliwice